

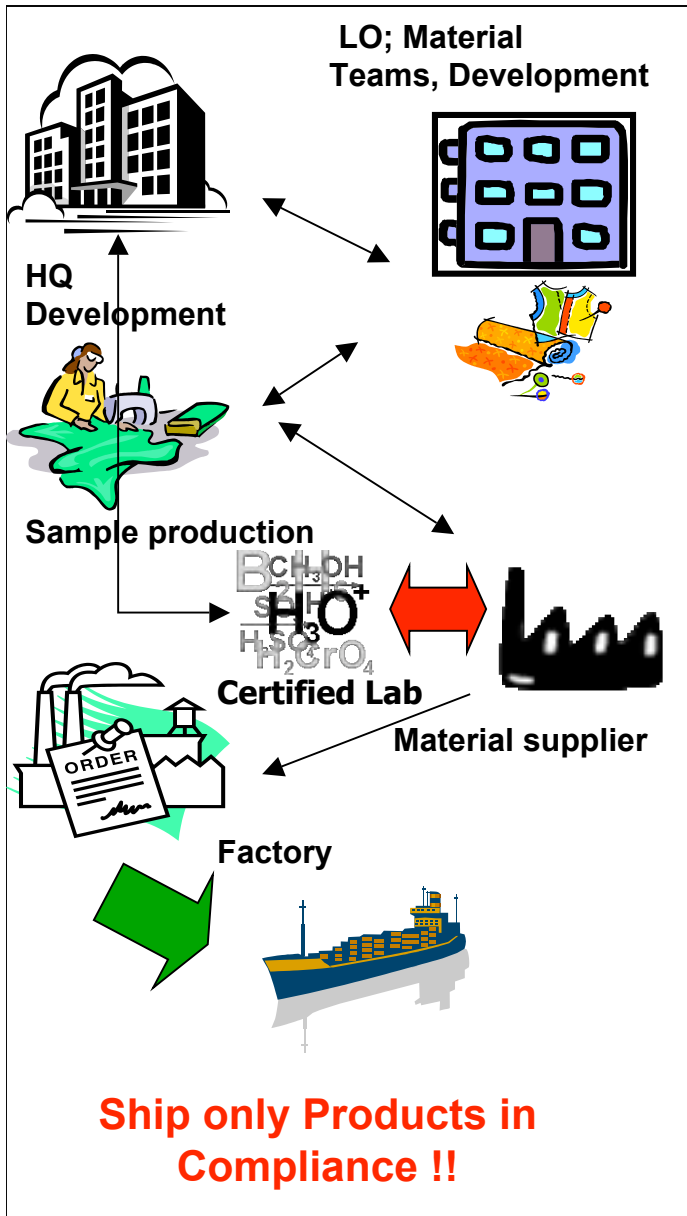
TESTING

Reiner Hengstmann

Social & Environmental
Affairs

PUMA AG





TESTING

GENERAL PROCEDURE

- Get certificates or follow the testing procedure
- All materials have to be verified
 - Use accredited labs
- Company RSL must be fulfilled
 - Ship only products in compliance with company RSLs!

adidas
GROUP

GAP

Levi's

MARKS &
SPENCER

NORDSTROM

PUMA

s.Oliver TESCO

C&A

H&M

Nike

Phylmar Group
Environmental
Health & Safety
Social Responsibility

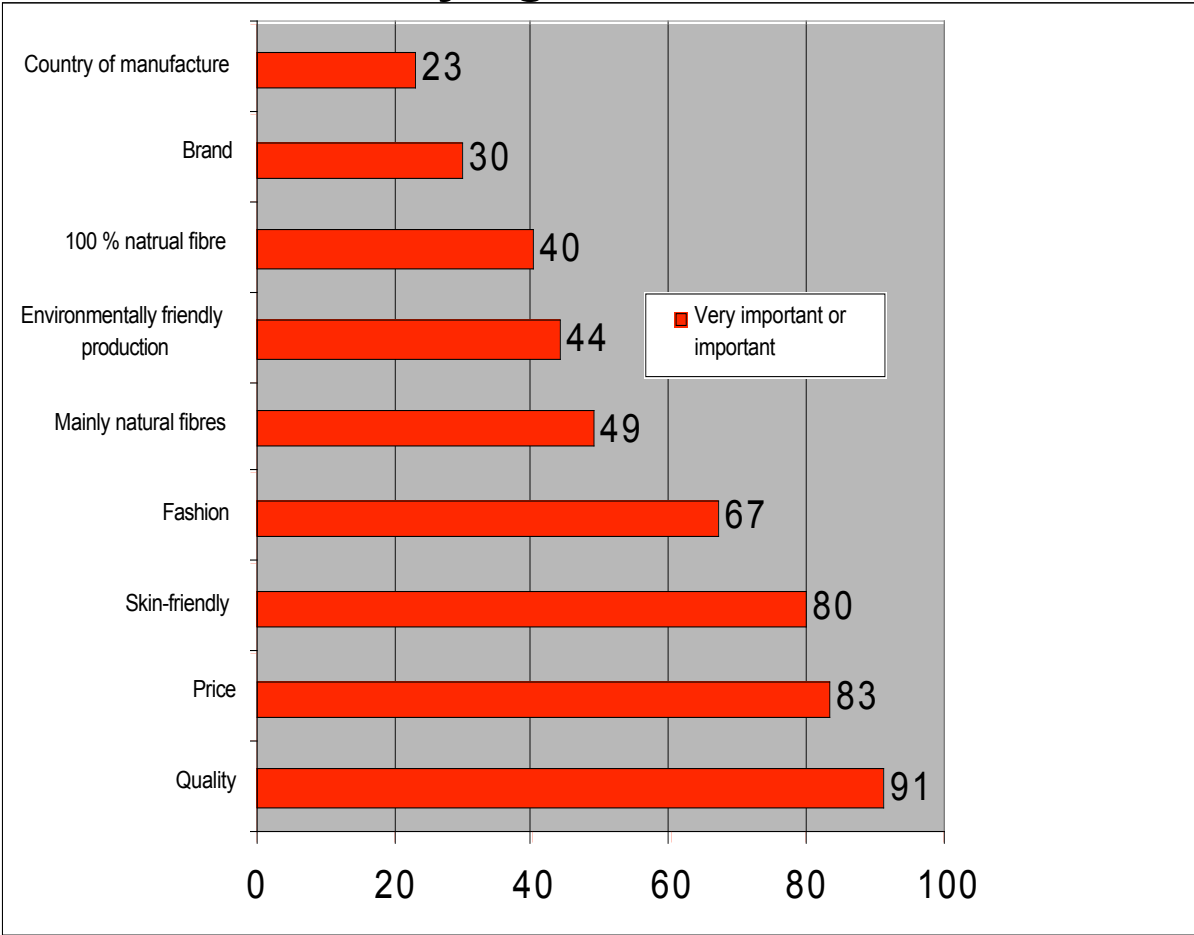
REI
www.rei.com

Timberland

2 2

TESTING

What is the customer preference for buying textiles?



TESTING

WHY IS IT IMPORTANT TO TEST?

- Consumer safety
- Product safety
- Production safety
- Environment safety
- Workplace and worker safety



adidas
GROUP

GAP

Levi's

MARKS &
SPENCER

NORDSTROM

PUMA

s.Oliver TESCO



H&M



Phylmar Group
Environmental
Health & Safety
Social Responsibility

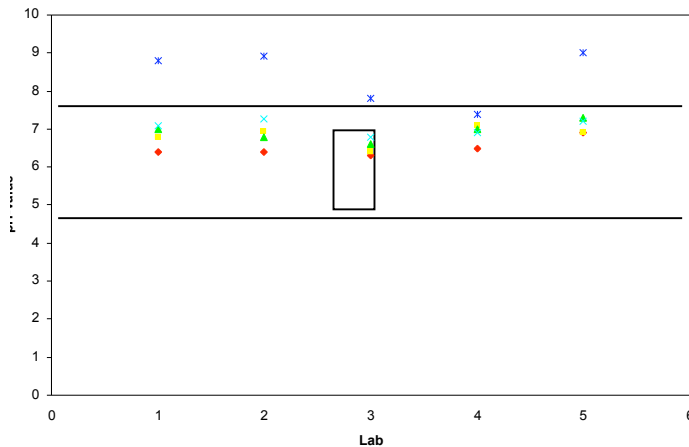


Timberland

5

TESTING

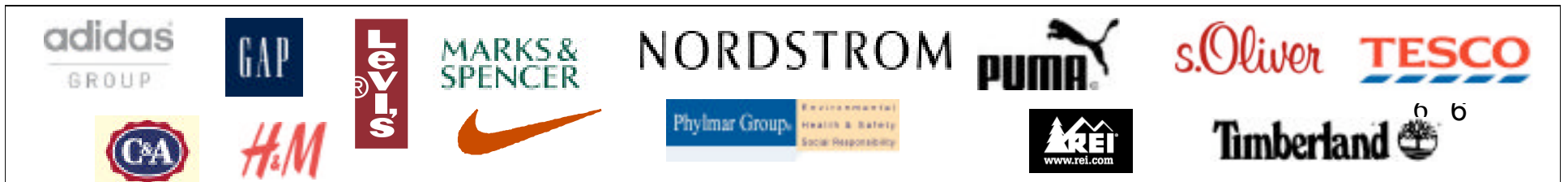
pH round robin test



5 labs
only one passed

WHO SHOULD DO THE TESTING?

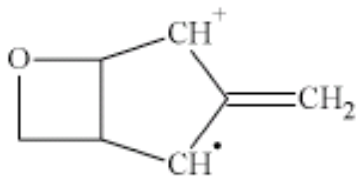
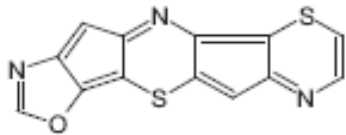
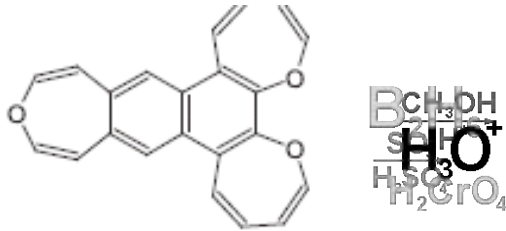
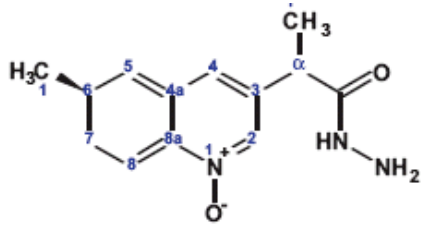
- Labs with an international reputation
- Labs which are accredited
- Labs which participate frequently in round robin testing



TESTING

WHEN AND WHAT TO TEST?

- Follow company RSL requirements
- Oeko-Tex 100 Standard, if required by customer



adidas
GROUP

GAP

Levi's

MARKS &
SPENCER

NORDSTROM

PUMA

s.Oliver

TESCO

C&A

H&M



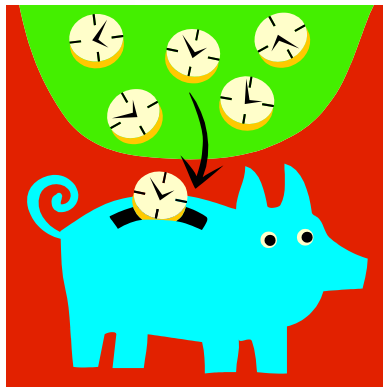
Phylmar Group

Environmental
Health & Safety
Social Responsibility

REI
www.rei.com

Timberland

TESTING GUIDANCE



- Have a standard procedure
- Test every season or every new material, as required by customer
- Be proactive to avoid wasting money
- Make testing as efficient as possible

adidas
GROUP

GAP

Levi's

MARKS &
SPENCER

NORDSTROM

PUMA

s.Oliver TESCO



H&M



Phylmar Group
Environmental
Health & Safety
Social Responsibility



Timberland

TESTING GUIDANCE



Keep the balance

- Use company specified test methods. If none specified, use internationally recognized test methods.
- Make sure results will be globally comparable.
- In case of questions, do not act on your own. Contact your customer.

adidas
GROUP

GAP

Levi's

MARKS &
SPENCER

NORDSTROM

PUMA

s.Oliver

TESCO

C&A

H&M



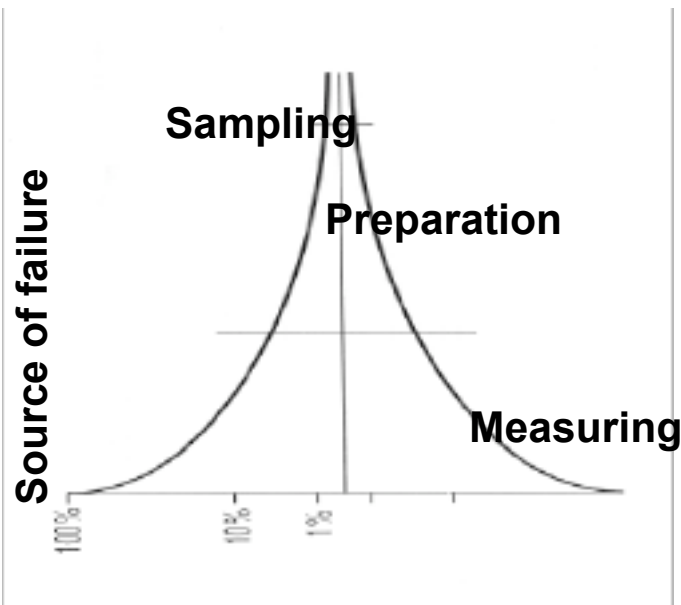
Phylmar Group

Environmental
Health & Safety
Social Responsibility

REI
www.rei.com

Timberland

TESTING GUIDANCE



— Total = — Sampling + — Preparation + — Measuring

- The testing procedure starts with the sampling
 - Poor sampling may cause failures, delays, and increase costs
- Every test result is only as good as the technique of taking the sample

adidas
GROUP

GAP

Levi's

MARKS &
SPENCER

NORDSTROM

PUMA

s.Oliver

TESCO



H&M



Phylmar Group
Environmental
Health & Safety
Social Responsibility



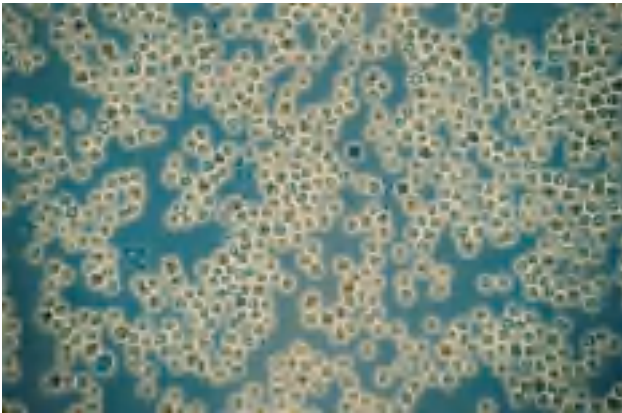
Timberland



TESTING

Example:

- Supplier collected a fresh water sample
- Sent for testing according to potable water guidance
- Failed because it contained 3,000 Coliform bacteria which may lead to serious health effects
- Could have led to needless investment to improve water supply
- Finally found out that the sampling technique was wrong, correct sampling and retesting resulted in acceptable results



adidas
GROUP

GAP

Levi's

MARKS &
SPENCER

NORDSTROM

PUMA

s.Oliver TESCO



H&M



Phylmar Group
Environmental
Health & Safety
Social Responsibility



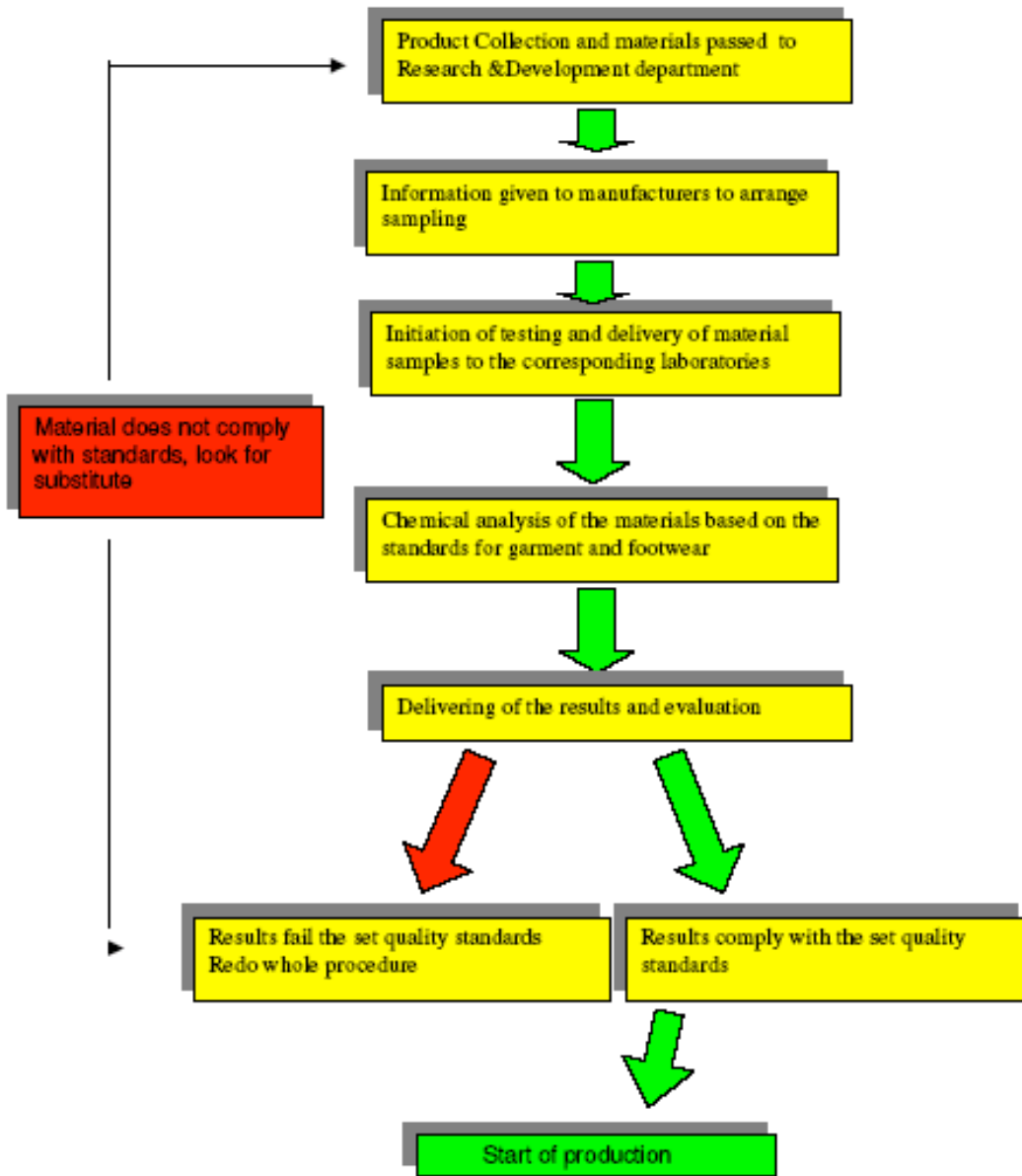
Timberland



TESTING GUIDANCE

Before you do the sampling of material, please ask:

- **HOW?** Should I take the sample
- **FROM WHERE?** Should I take the sample
- **HOW MUCH?** Should I take
- **HOW?** Should I prepare the sample
- **HOW?** Should I send the sample



adidas
GROUP

GAP

Levi's

MARKS &
SPENCER

NORDSTROM

PUMA

s.Oliver

TESCO

C&A

H&M

Nike

Phylmar Group
Environmental
Health & Safety
Social Responsibility

REI
www.rei.com

Timberland

12.12